



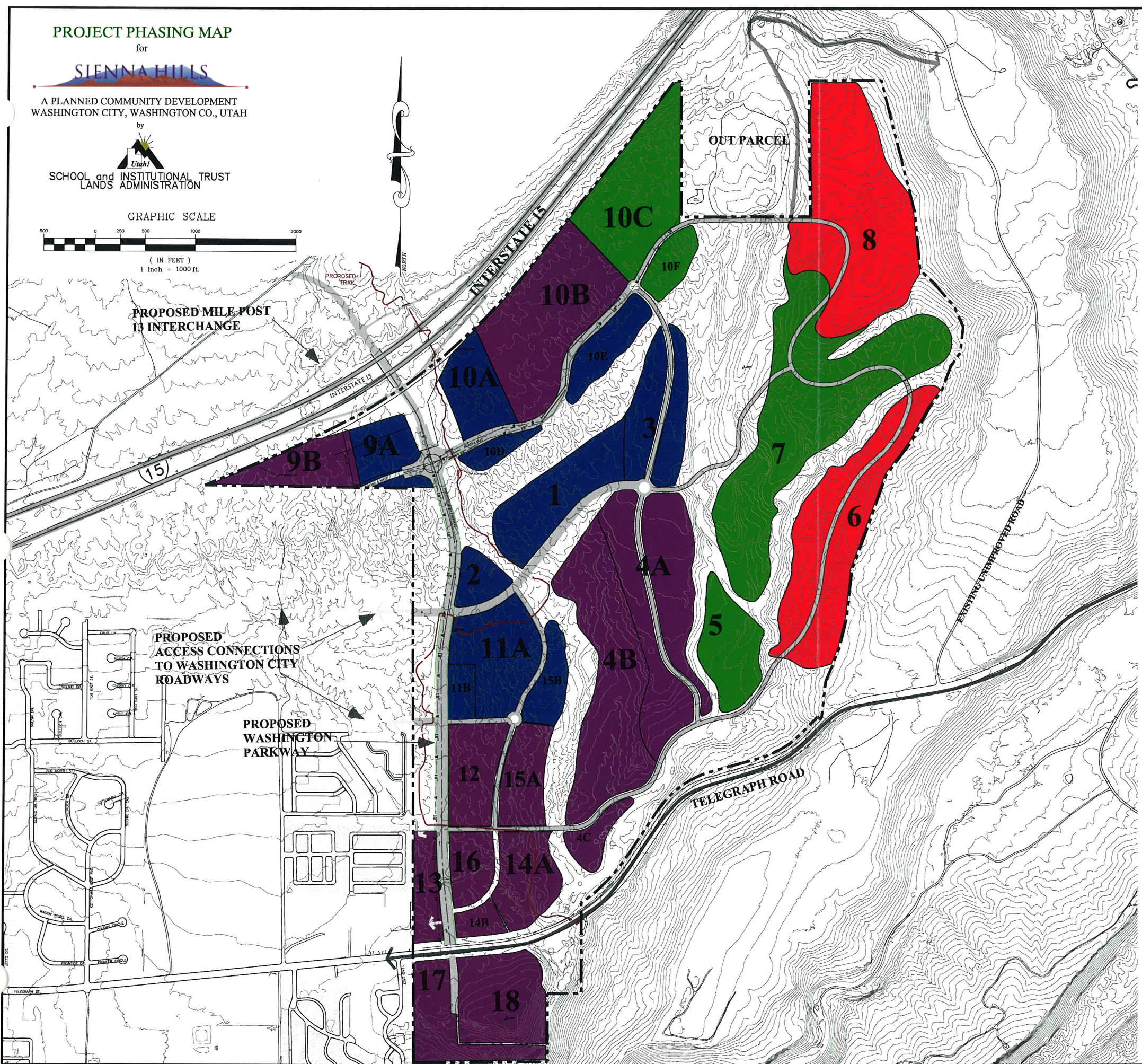
Section

12

PCD Project Plan

Project Phasing Plan

In accordance with Washington City Zoning Ordinance 29-2-103(12), the project phasing plan includes approximate phasing locations.



LAND USE LEGEND 09-16-04

NEIGHBORHOOD	LAND USE	ACRES	UNITS	SQ. FT.	D.U./AC.
1.	RESIDENTIAL	17.7	88	771,000	4.97
2.	MIXED USE	4.9	59	212,600	12.0
3.	RESIDENTIAL	15.6	78	678,500	5.00
4.A	RESIDENTIAL	33.2	166	1,447,500	5.00
4.B	RESIDENTIAL	35.0	175	1,523,900	5.00
4.C	RESIDENTIAL	4.3	21	187,400	4.88
5.	RESIDENTIAL	12.9	38	580,200	2.95
6.	RESIDENTIAL	35.7	107	1,556,500	3.00
7.	RESIDENTIAL	57.6	172	2,509,600	2.99
8.	RESIDENTIAL	46.4	242	2,108,800	5.00
9.A	FREEWAY COMMERCIAL	8.5		370,300	
9.B	FREEWAY COMMERCIAL	10.0		434,700	
	LODGING (ROOMS)		200		
10.A	FREEWAY COMMERCIAL	10.5		459,200	
10.B	FREEWAY COMMERCIAL	32.5		1,417,200	
10.C	FREEWAY COMMERCIAL	25.3		1,104,100	
10.D	FREEWAY COMMERCIAL	3.2		139,700	
10.E	FREEWAY COMMERCIAL	7.9		344,000	
10.F	FREEWAY COMMERCIAL	5.4		235,400	
	LODGING (ROOMS)		600		
11.A	RESIDENTIAL	16.8	81	733,000	4.82
11.B	MIXED USE	3.2	38	137,600	12.0
12.	MIXED USE	11.3	136	492,600	12.0
13.	COMMERCIAL	6.2		268,700	
14.A	RESIDENTIAL	11.4	182	495,000	15.96
14.B	COMMERCIAL	3.0		129,700	
15.A	TOWNHOME	9.5	57	414,100	6.00
15.B	TOWNHOME	6.2	57	269,900	9.20
16.	RESIDENTIAL	6.6	106	289,400	16.06
17.	COMMERCIAL	12.0		522,800	
18.	TOWNHOME	16.9	203	734,000	12.00
	TOTALS				
		ACRES	UNITS	SQ. FT.	AVG D.U./AC.
	LODGING (ROOMS)		800		
	COMMERCIAL	124.5		5,425,800	
	RESIDENTIAL	327.8	1773	14,278,800	5.4
	MIXED USE	19.4	233	842,800	12
	DEVELOPABLE AREA	471.7		20,547,400	
	OPEN SPACE	266.8		11,621,800	

LEGEND:

- PHASE I DEVELOPMENT
- PHASE II DEVELOPMENT
- PHASE III DEVELOPMENT
- PHASE IV DEVELOPMENT
- TRAIL

PROJECT PHASING PLAN
FOR
SIENNA HILLS
LOCATED IN SECTION 12, TOWNSHIP 42 SOUTH,
RANGE 15 WEST, SALT LAKE BASE & MERIDIAN
CITY OF WASHINGTON, WASH. CO., UTAH

DRAWING NAME:
4028-PCD MasterPlan
FIGURE
1

ALLIANCE CONSULTING

A Planning and Engineering Firm

Suite 201
2303 N Coral Canyon Blvd
Washington, Utah 84780-0577

Tel (435) 673-5060
Fax (435) 673-5065

DATE: 6-04-04
JOB NUMBER: 4028-03
SCALE: 1" = 1000'
DRAWN BY: CCC
CHECKED BY: